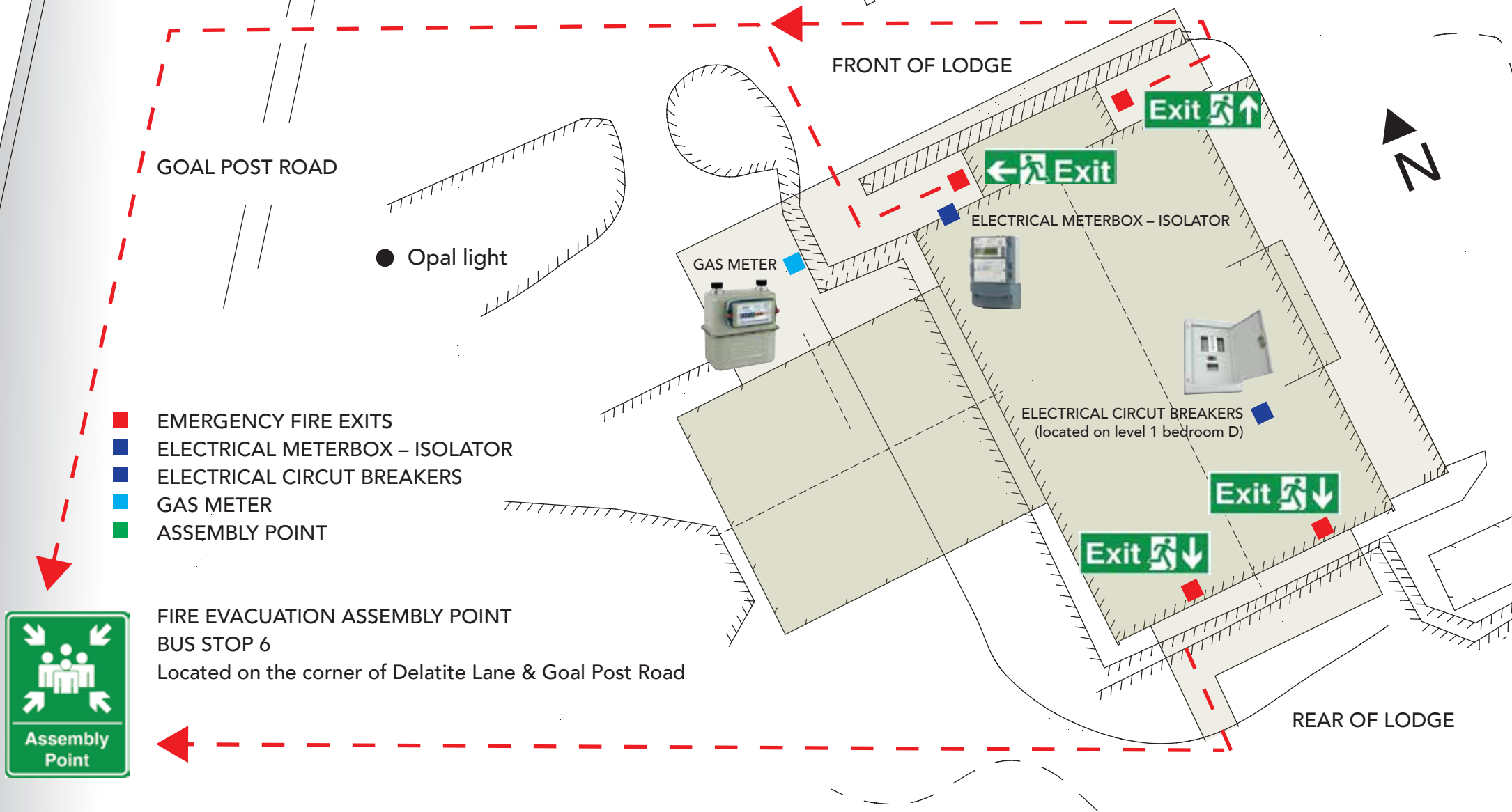


FIRE EVACUATION & CRITICAL LOCATIONS



20 Goal Post Rd



GOAL POST ROAD

FRONT OF LODGE

● Opal light

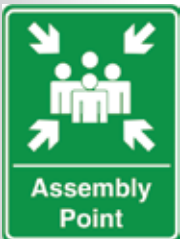
GAS METER

ELECTRICAL METERBOX - ISOLATOR

ELECTRICAL CIRCUIT BREAKERS
(located on level 1 bedroom D)

- EMERGENCY FIRE EXITS
- ELECTRICAL METERBOX - ISOLATOR
- ELECTRICAL CIRCUIT BREAKERS
- GAS METER
- ASSEMBLY POINT

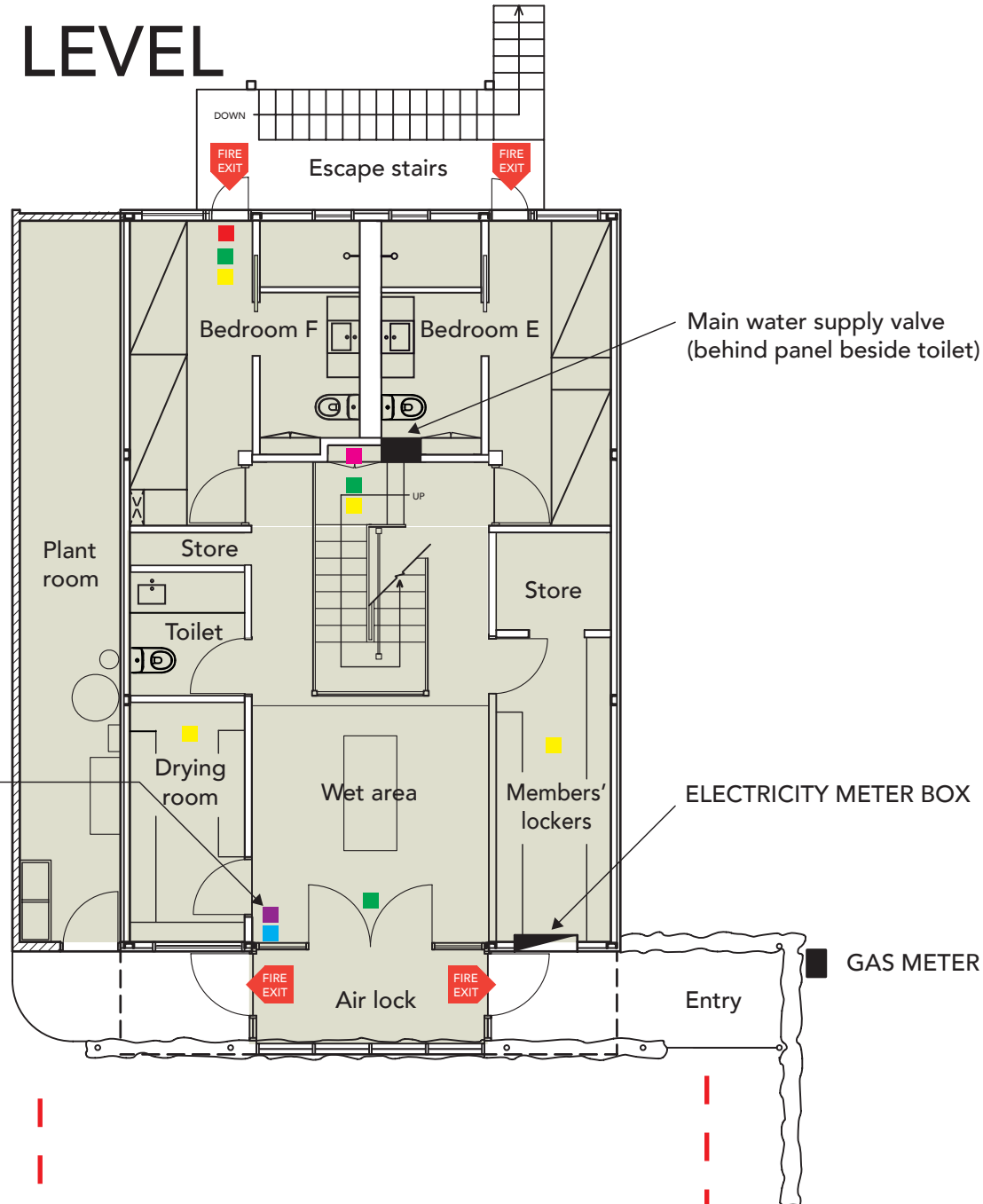
FIRE EVACUATION ASSEMBLY POINT
BUS STOP 6
Located on the corner of Delatite Lane & Goal Post Road



REAR OF LODGE

GROUND LEVEL

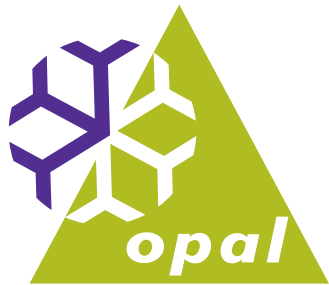
- EMERGENCY EXIT
- EXIT LIGHT
- FIRE EXTINGUISHER
- FIRE HOSE REEL
- FIRE BLANKET
- SMOKE DETECTOR
- HAZMAT CABINET



BUS STOP 6



GOAL
POST
ROAD



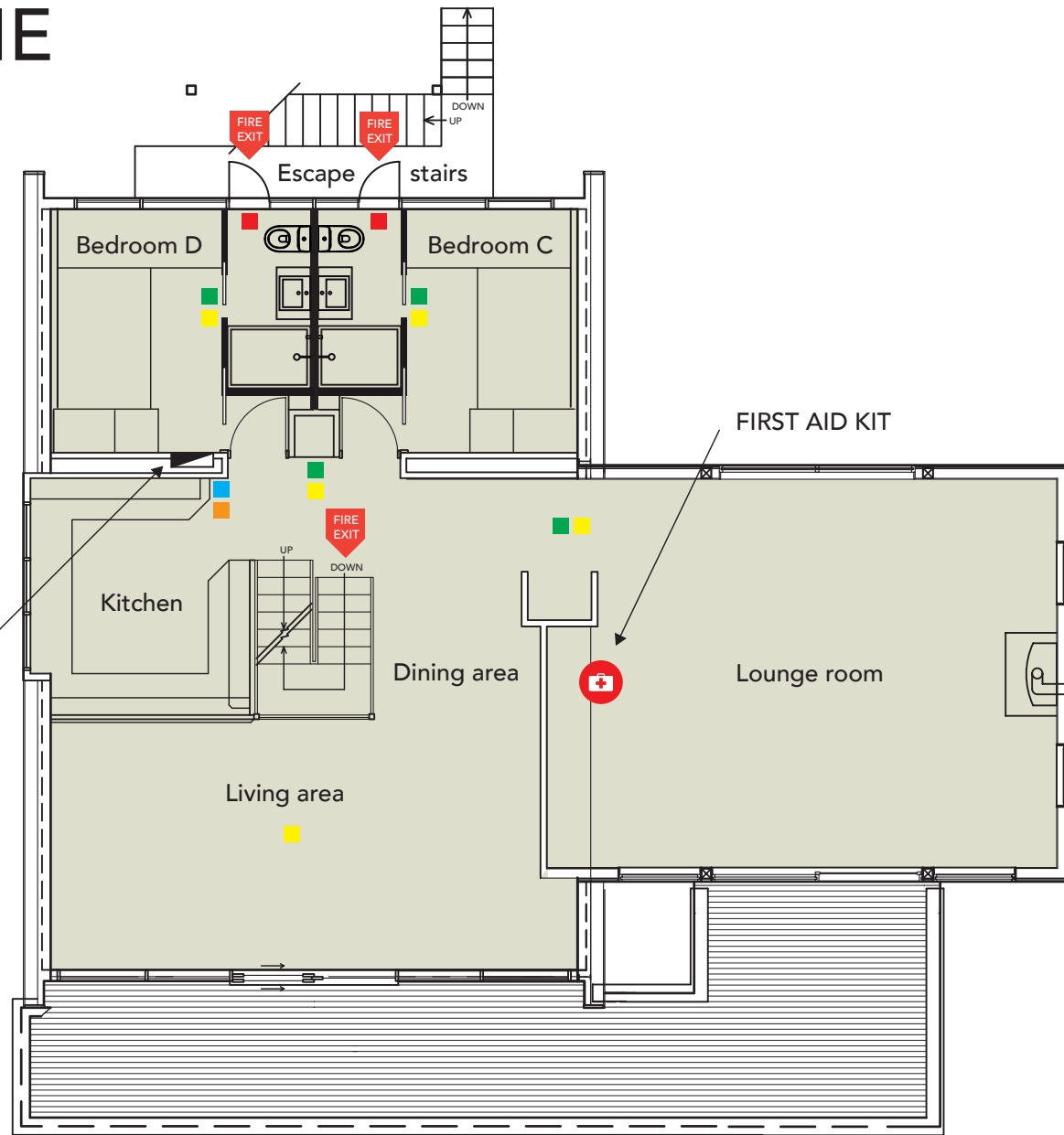
20 Goal Post Rd

LEVEL ONE

- EMERGENCY EXIT
- EXIT LIGHT
- FIRE EXTINGUISHER
- FIRE HOSE REEL
- FIRE BLANKET
- SMOKE DETECTOR



ELECTRICITY
CIRCUIT BREAKERS



BUS STOP 6

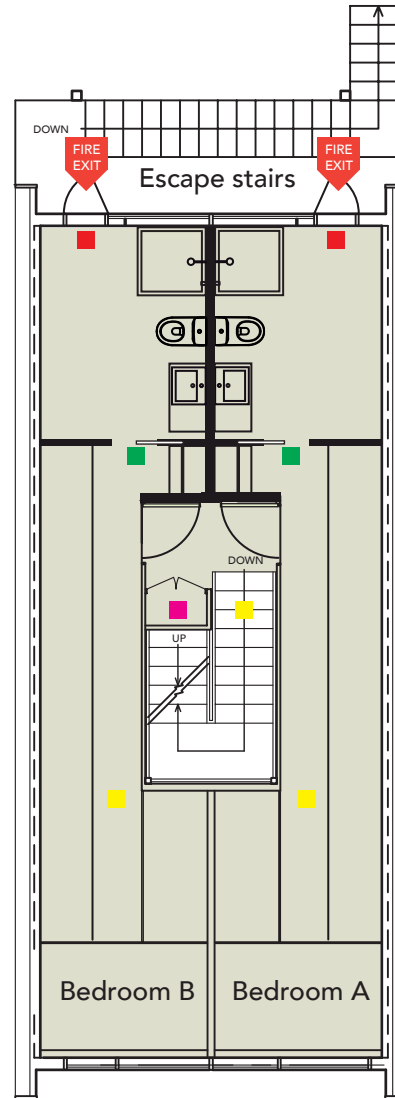
GOAL
POST
ROAD



20 Goal Post Rd

LEVEL TWO

- EMERGENCY EXIT
- EXIT LIGHT
- FIRE EXTINGUISHER
- FIRE HOSE REEL
- FIRE BLANKET
- SMOKE DETECTOR



BUS STOP 6

GOAL
POST
ROAD



20 Goal Post Rd